

ROTATING LIGHTBOX **XLRB**

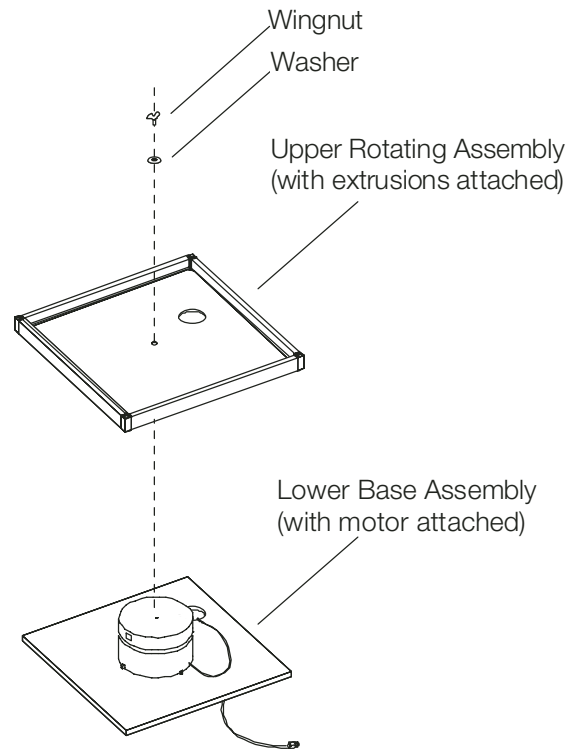
Dimensions 35 1/2"H x 23 13/16"W x 23 13/16"D
 Max. Load 50 lbs.
 R.P.M. 2

KIT CONTENTS **QTY**

Upper Rotating Assembly	1
Plexiglas Panels	4
LLH Light Assembly	1
Lower Motor Base Assembly	1
P90S with LPJ Connectors	4
SS1's	4

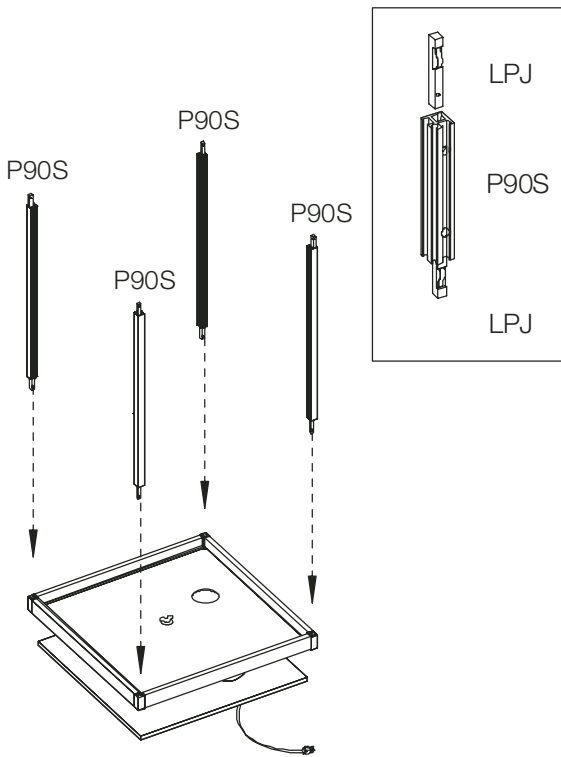
*The cord for the lights plugs into the rotating outlet on the motor.

*An external switch is required to turn the motor on and off otherwise it will be necessary to unplug the motor.



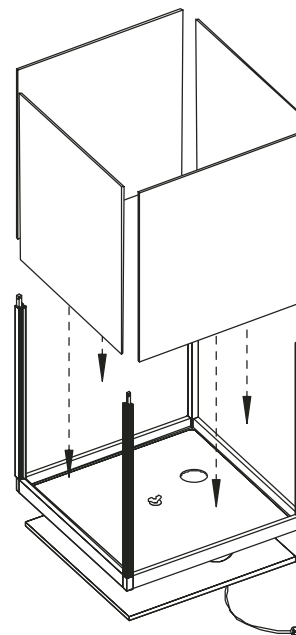
Step 1

Assemble both Rotating Lightbox assemblies.



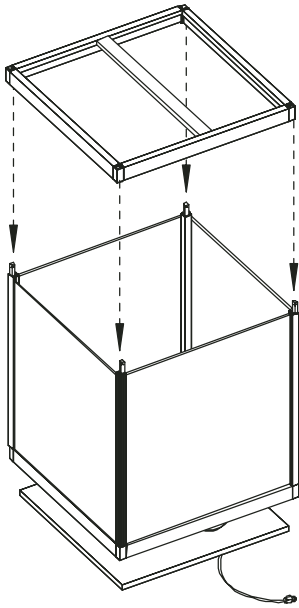
Step 2

Assemble P90's (with LPJ connectors attached).



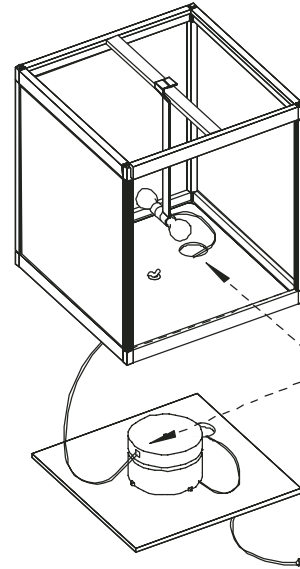
Step 3

Add Plexiglas infills by sliding into the P90S channels.



Step 4

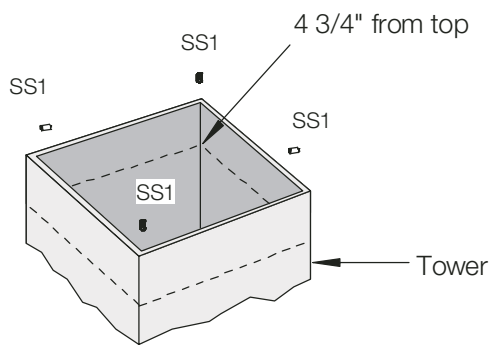
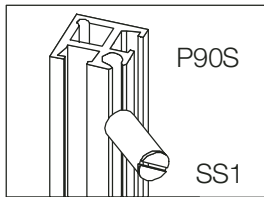
Place the pre-assembled top frame.



Thread the cord through the grommet and plug into the rotating outlet on the motor.

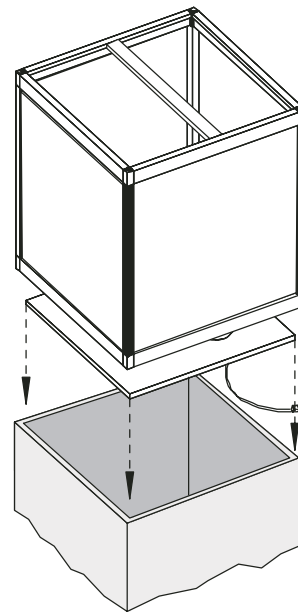
Step 5

Hang the LLH light from the middle extrusion.



Step 6

Attach SS1's supports on the extrusions 4 3/4" from top edge of the tower.



Step 7

Carefully place entire assembly into tower resting on the SS1's.