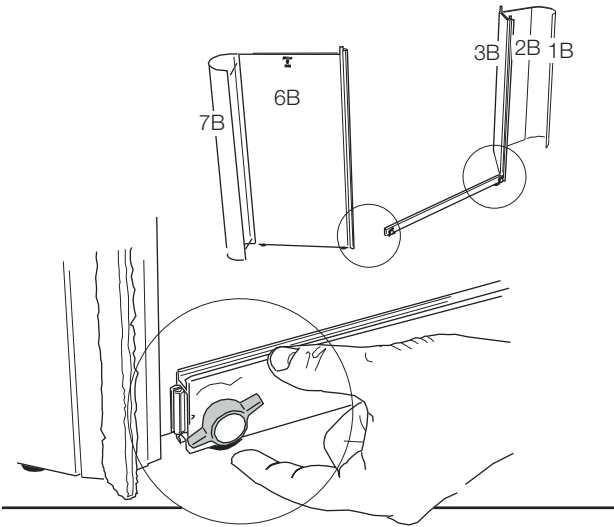
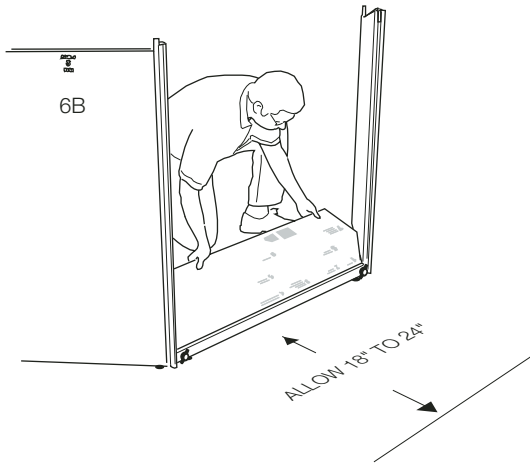


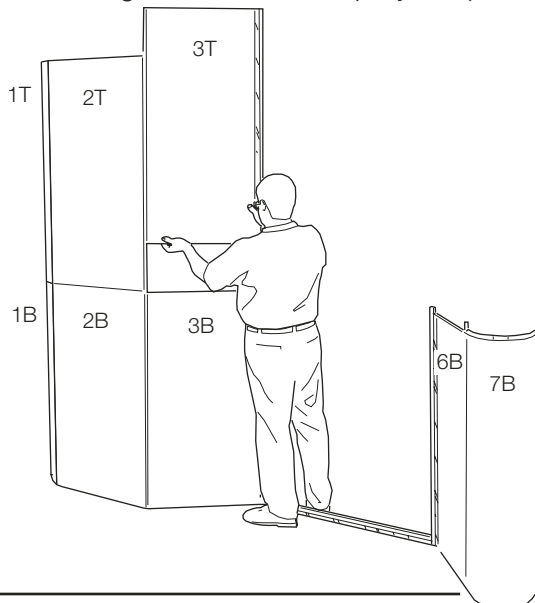
1. Set up panels 1B-2B-3B. From behind the booth attach the base horizontal extrusion by tightening the thumbscrews. Continue setting up panels 6B and 7B.



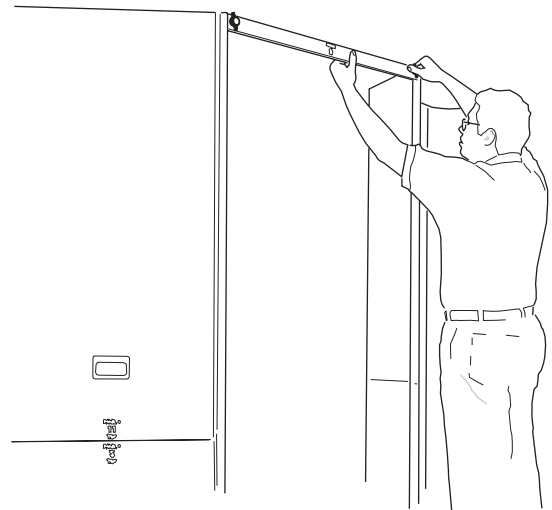
2. Use the supplied template to set the angle of the panels. (Be sure to leave 18" to 24" of space behind the exhibit. This is to allow for the roll-up lightbox backer.)



3. Continue building the unit with the top layer of panels.



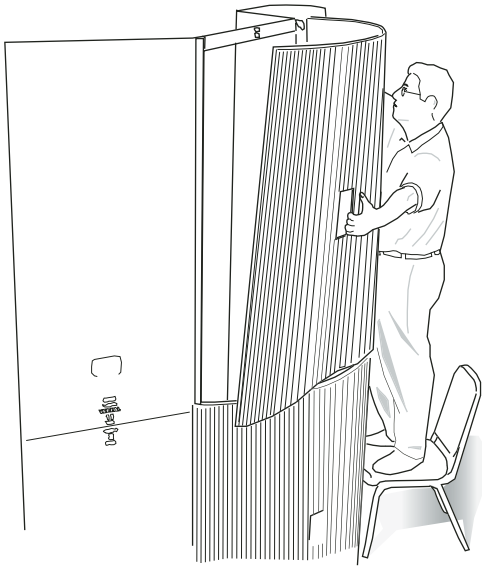
4. From behind the booth attach the top horizontal extrusion by tightening the thumbscrews.



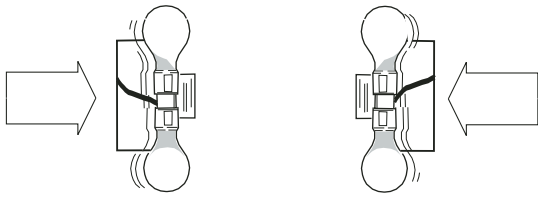
5. Unroll one lightbox backer (both backers are identical) from behind the booth attach it to the loop tape on the back edge of the panels forming an arc.



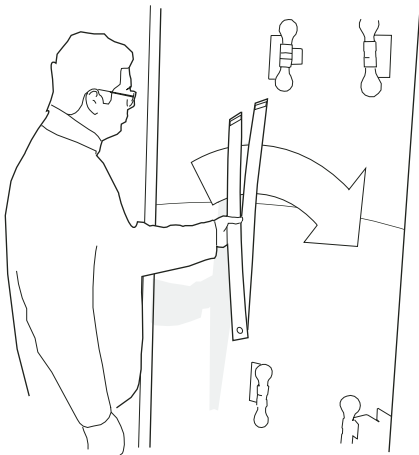
6. Apply the top panel of the lightbox backer to the unit.



7. Clip the lights on the inside of the roll up lightbox backer and run the cords out towards the back.



8. Unfold the alignment flap to install.



9. Attach the alignment flap over the seam, between the top and base lightbox backers, by first applying the ends while holding the center away from the lightbox backers.



10. Push the center of the flap back to align the panels. Making sure to cover the seam.

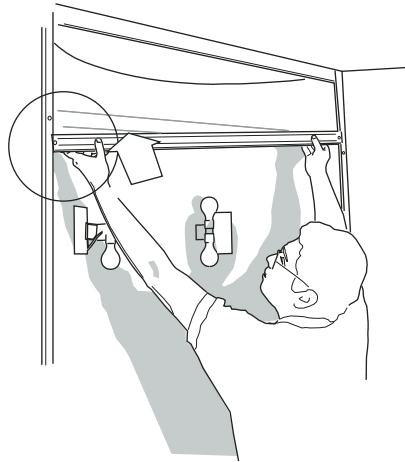
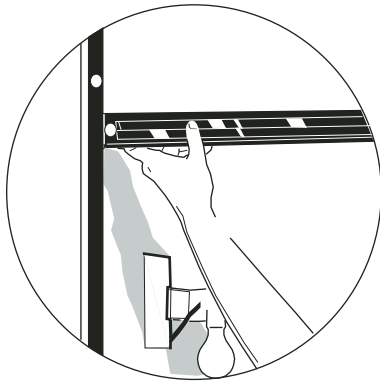


11. Apply the full graphic.

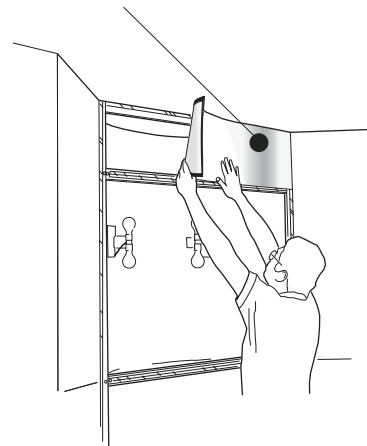


OPTIONAL PANEL ASSEMBLY

12. For the optional fabric or laminate header panel, two additional horizontal extrusions must be inserted into the lightbox opening from behind. The white dots on the frame are aligned to the dots on the extrusions.



13. Apply the header panel from the front of the booth.



14. Apply the graphic panels.

