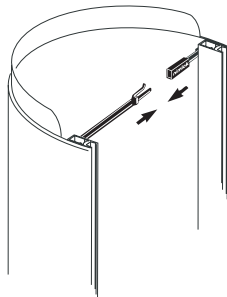


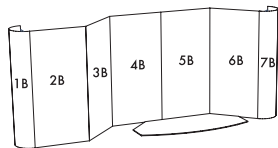
EASY ST INSTRUCTIONS

1 UNPACK
Unpack all the panels from the cases. Do not discard the packing material.

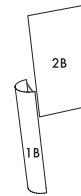
2 ASSEMBLE CURVES
To form a curved panel, connect braces.



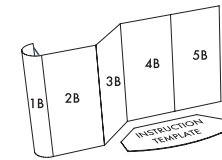
5 FINISH BASE ASSEMBLY
Add all base panels as required in your configuration.



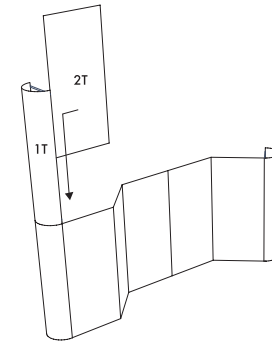
3 START ASSEMBLY FROM BOTTOM LEFT PANEL
All panels are numbered left to right looking from **Front** of unit. Assembly starts from bottom left panel, marked **1 Base (1B)** and continues with panel marked **2 Base**.



4 USE INSTRUCTIONS AS ANGLE GUIDE
Use this instruction sheet, as shown, as an angle guide as you continue building the bottom layer.



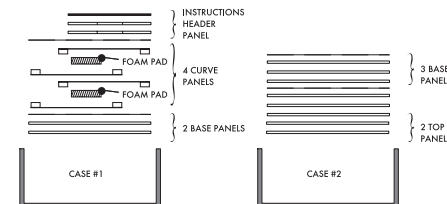
6 START TOP ASSEMBLY
Add first panel marked **1 Top (1T)** into position. Add second panel by sliding aluminum link into routed portion of panel **1 Top**. Slide panel into position.



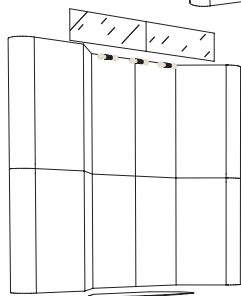
8 PACKING
Using the K27 packing example shown, repack your exhibit

Please note:

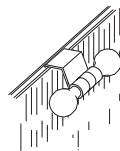
- Always use cardboard sheets between panels, as shown.
- Replace foam pad between curves to prevent damage.
- Careful packing will greatly extend the life of your exhibit.
- If parts should become damaged, contact your local Nimlok distributor to order replacements.
- **Always pack panels fabric to fabric or back to back.**
- When dismantling, start with top right panel and continue in reverse order from set up.



7 FINISH TOP ASSEMBLY. ADD LIGHTS AND HEADER
Add remaining top panels until assembly is complete. Position light fixtures where indicated on the panels. Assemble optional Acrylic header and position on back wall.



To assemble header, slide connectors into position and tighten thumb screws. Headers attach to side returns with hinged connector. This connector can be raised or lowered with a Phillips head screwdriver.



Be sure to allow adequate distance between double bulb light fixture and panel to prevent scorching fabric.

Restricted Ceiling Height
Should there be inadequate ceiling height to set up as in Step 7 the ST System can still be completely assembled. Start by lifting Panel 1T 3-4 inches and adding 2T from the base of 1T and slide upwards. Continue in the same way with remaining top panels.

